



TR 610 top



TR 611 top/TR 611 top DCF



TR 622 top

By means of text-oriented operator guidance you are escorted step by step through the entire programming.

Function:

- Week program
- Operator guidance by an integrated text line on the LCD display
- Programming is shown graphically by a means of a bar chart on the LCD display
- Preset ex-works - time (CET) and automatic summer/winter time changeover
- Summer/winter time changeover can be alternatively switched off or randomly programmed (GB, USA changeover norm selectable)
- High number of memory locations
- Guided copying of the switching times to other days of the week (random block formation)
- Sorting of the switching times in memory by the day of the week
- Switching preselection
- Permanent switching
- Lithium battery and EEPROM

TR 610 top TERMINA®

- 1 channel with 28 memory locations

TR 612 top TERMINA®

- 2 channels with 42 memory locations

TR 611 top TERMINA®

- 1 channel with 42 memory locations
- Holiday switching and random function
- Pulse and cycle program
- LCD backlighting

TR 611 top DCF TERMINA®

- as TR 611 top, but DCF77 radio controlled
- DCF power unit integrated
- External DCF antenna connectable
- without LCD backlighting



DCF antenna

TR 622 top TERMINA® as TR 611 top, but

- 2 channels with 42 memory locations
- With holiday, random and pulse program separate for each channel.
- Cycle program for channel 1.

Common technical specifications:

Rated voltage: 230-240 V~ + 6 % - 10 %

Frequency: 50 - 60 Hz

Own consumption: max. 6 VA

Contact: zero-potential, break gap less than 3 mm (μ)

Contact material: Ag Sn O₂

Switching power: 16 A, 250 V~, cos φ = 1; 10 A, 250 V~, cos φ = 0.6

Incandescent lamp load: 2300 W

Halogen lamp load: 2300 W

Fluorescent lamps: non-compensated, series comp. 1000 W, parallel comp. 400 W (42μF)

Compact fluorescent lamps: 9x7 W, 7x11 W, 7x15 W, 7x20 W, 7x23 W

Timing basis: quartz

Working precision: ≤ ± 1 sec./day at 20°C

Shortest switching time: 1 minute

(pulse/cycle

1 sec.)

Switching precision: exact to the second

Display: LCD display with text line

Operating control elements: 4 touch keys and 1 reset key

Power reserve: approx. 4 years with display with full controllability (temp. 20°C) by means of an environmentally friendly lithium battery

Permissible ambient temperature: -10°C...+50°C

Enclosure and insulation material: high-temperature resistant, self-extinguishing thermoplastics

Protection class: II in compliance with EN 60730-1 if installed as directed

Degree of protection:

IP 20 in compliance with EN 60 529

Test approvals:

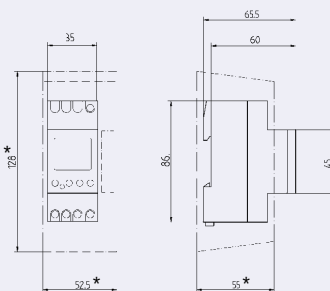
Weight: approx. 170 g

See page 14 for installation instructions.

Design:

- Standard enclosure 45 x 35 x 60 (mm)
- Quick fastening facility for 35 mm DIN rail (EN 50 022)
- Built-on installation with an additional terminal cover which can be fitted with a leadable seal
- Switch panel installation complete with installation kit no. 907 0 001
- Captive hinged cover which can be fitted with a leadable seal

Dimension drawings (DIN 43 880)



* with terminal cover

Terminal cover





It's so easy!

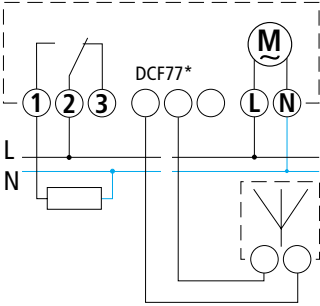
With its innovative technology, design and ergonomics, TERMINA top has earned the following awards: Elex 2000, tip 2000, designlink 2001, ETOP Award 2001.

**TR 610 top (1 channel)
Factory preset time and date**

Programs

- Day and week program
- For standard programs
- 28 memory locations

Connection diagram TR 610 top/TR 611 top/
TR 611 top DCF*



**TR 611 top/TR 611 top DCF (1 channel)
Factory preset time and date**

Programs

- Day and week program
- For more extensive programs
- 42 memory locations

Special functions

- Holiday program: Programmed via start and end dates
- Pulse program for bell or break signals, can be set accurately to the minute, pulse duration 1–99 sec.
- Cycle program, e.g. water flushing device in toilet facilities (15–99 min pulse duration and pause time)
- Random switching

**TR 612 top/TR 622 top (2 channels)
Factory preset time and date**

Programme TR 612 top

- Day and week program
- For standard programs
- 42 memory locations

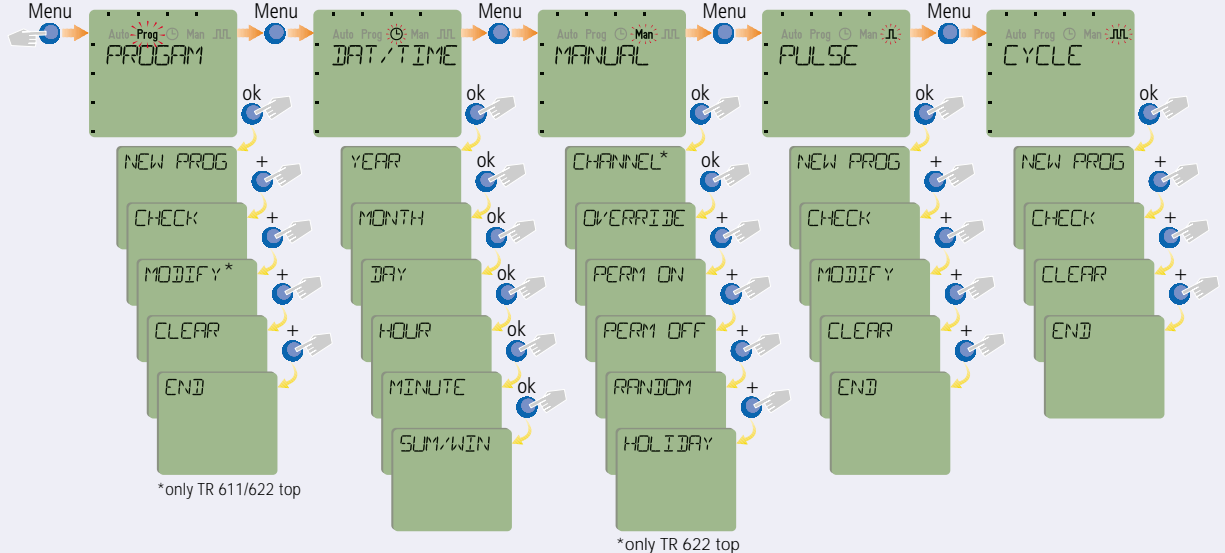
Programme TR 622 top

- Day and week program
 - For more extensive programs
 - 42 memory locations
 - Pulse program, programmable for each channel separately
 - For bell and break signals – pulse duration 1–59 sec.
 - Cycle program, can be programmed for channel 2
 - Random switching
- Connection diagram TR 627 see page 27.

Overview of the menu levels

TR 611/622 top

TR 610/612 top



*only TR 611/622 top

*only TR 622 top

Type	Program	Memory location	Power reserve (Lithium)	Programmable every ...	LCD backlight	Switch contacts	Rated current at 250 V~	Ordering no.
TR 610 top 1 channel	24 h 7 days	28	4 years	1 min.	–	1 changeover switch	16(10) A	610 0 002
TR 612 top 2 channels	24 h 7 days	42	4 years	1 min.	–	2 changeover switches	16(10) A	612 0 002
TR 611 top 1 channel	24 h/7 days random	42	4 years	1 min.	yes	1 changeover switch	16(10) A	611 0 002
TR 611 top DCF 1 channel	switching, holiday program, pulse and cycle program	42	4 years	1 min.	–	1 changeover switch	16(10) A	611 0 312
TR 622 top 2 channels	switching, holiday program, pulse and cycle program	42	4 years	1 min.	yes	2 changeover switches	16(10) A	622 0 002

Antenna for DCF77 radio signal

Terminal cover for built-on installation, can be fitted with a leaded seal

907 0 243

907 0 064